

# Mounting instruction Depth transducer + amplifier box

## CONTENTS:

1. General
2. Part specification
3. Location of the transducer
4. Installation
5. Connection of the amplifier box to the instrument
6. Calibration
7. Technical data
8. Warranty

## 1. GENERAL

The NEXUS Depth transducer is a through-hull transducer designed to meet the requirements of owners of sailing craft and as power boats.

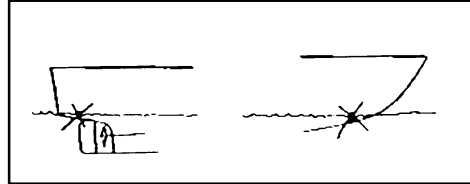
## 2. PART SPECIFICATION

- 1 # Mounting instructions
- 1 # Warranty card
- 1 # Amplifier box inc. 4 screws
- 1 # Depth transducer with 3 m cable
- 1 # Nut
- 1 # Instrument cable 8 m
- 4 # Extra cable protectors (0.25 mm)

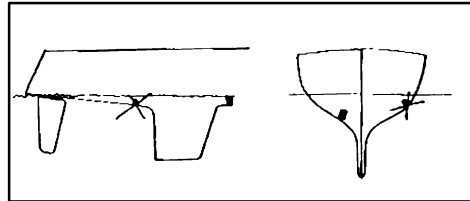
## 3. LOCATION OF THE TRANSDUCER

Correct positioning of the depth sounder transducer is of prime importance for the

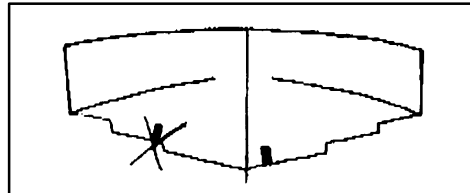
accuracy of the reading. The transducer should be located on an area of the hull that will be under water at all times and free from bubbles of turbulence caused by the keel or the propeller.



Avoid fitting the transducer near the edge of sharp hull chines. Transverse waterflow in these areas may be turbulent and thus will affect the measurements.



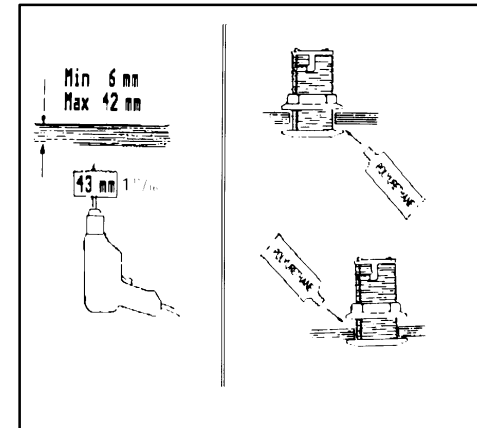
Although the transducer sends out a signal at various angles, the transducer should be installed as vertically as possible. For this reason, a location close to the centreline is preferred.



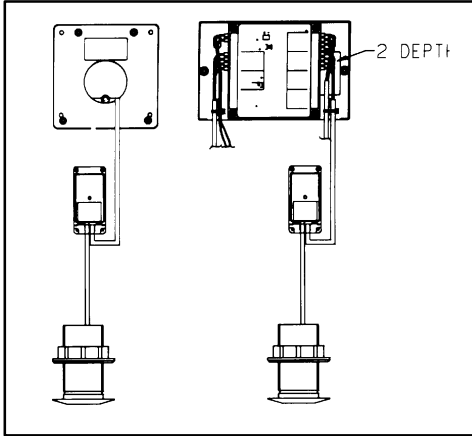
If you have questions about the location of the transducer, contact your builder, yacht dealer, or other sailors with similar boats for advice. Always remember to allow for accessibility from the inside of the yacht when determining the final location!

## 4. INSTALLATION

1. Use a 43 mm (1 11/16") hole cutter to cut through the hull. (See section 3 for correct location).
2. Apply polyurethane sealing compound on the outer flange of the transducer and tighten the nut on the inside by hand.
3. When this outer sealant has cured, remove the nut and apply sealant on the inside. Tighten the nut again by hand.



## 5. CONNECTION OF THE AMPLIFIER BOX TO THE INSTRUMENT



The transducer cable is clearly marked with No 2 and the colours will correspond to the input screw terminal on the Server.

If the 8 m cable between the Server and the amplifier box needs to be cut, use the supplied instrument extra cable protectors. Press the protectors on to each wire with a pair of flat pliers.

**IMPORTANT! DO NOT CUT THE 3 M TRANSDUCER CABLE!**

## 6. CALIBRATION

Adjustments are carried out in the Multi Control instrument or the Depth instrument (see manual).

## 7. TECHNICAL DATA

Dimensions: Amplifier box 140 x 68 x 42 mm (5 1/2 x 2 2/3" x 1 5/8")  
Transducer: 42 x 86 mm (1 5/8" x 3 3/8")  
Transducer cable: 3 m + 8 m (9.9 ft + 26.2 ft)  
Power supply: 12V DC (10-16V)  
Power consumption: 0.2 W  
Depth range: 0.8 - 150 m (3 - 450 ft) at speed up to 30 knots.  
Accuracy:  $\pm 0.1\%$   
Type of transducer: Piezocrystal 200 kHz  
Temperature range: Operation -10°C to +70°C  
Storage -35°C to +85°C

The depth measuring is based on the echos speed in water which is 1,463 m/sec.

## 8. WARRANTY

The Manufacturer gives a two year warranty against manufacturing faults of faulty components. The supplied warranty card together with a purchasing receipt must be shown if a warranty claim is made. The warranty does not apply to damage cause by careless handling, faulty installation nor for damage cause by not fusing the instrument according to the instruction. The right to change the specification is reserved by the manufacturer.